

# Thermal Control Solutions

Heaters & Thermostats - Product Catalog

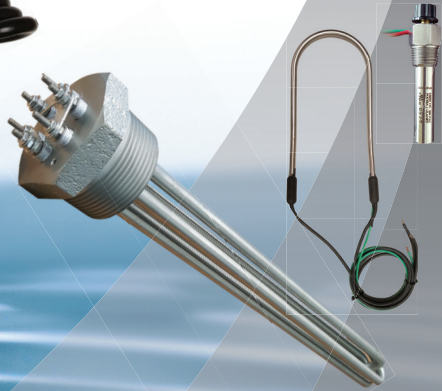
Immersion Heaters



Thermostats - Bulb & Capillary, Cartridge



Standard & Custom Heating Elements



Knife Box Sterilizers & Food Safety Components





# Rostra Ulanet

Thermal Control Solutions  
Division of Rostra Vernatherm

P.O. Box 3060  
Bristol, Connecticut 06011-3060

## Notes:

---

---

---

---

---

---

---

---

---

---

---

---

---

---

---

---

---

---

---

---

---

---

---

---

---

# About Ulanet

## History

Ulanet™, formally known as “The George Ulanet Company” was purchased by Rostra Vernatherm in 2016 and relocated to Bristol, CT. Rostra Vernatherm is a global supplier of thermal components for the aerospace industry among other industries. Ulanet is now a Division of Rostra and specializes in heating elements from standard to custom geometry, immersion heaters, thermostats, and food safety thermal controls.

## Quality

Quality control, and precision has been a major focus with Ulanet since Rostra Vernatherm purchased “The George Ulanet Company”. Extensive quality control measures have been implemented that embrace the manufacturing industry’s most efficient and effective methods. These measures ensure Ulanet products are free from defects, and you receive the best product possible.

## Markets

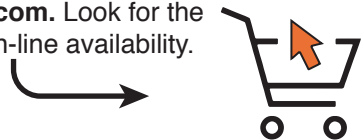
Our Ulanet products serve a wide variety of industries such as agriculture, food service, lab sterilization, process control, HVAC, Aerospace, brewing, distilling, and automotive. Our Ulanet products can be modified into almost any custom configuration by our on-site engineers; physical geometry, power levels, durability, materials, etc can all be modified to fit your unique needs.

## Manufacturing

Located in Bristol, CT USA, Rostra Ulanet houses its management, sales, engineering, and manufacturing operations in two 25,000 square foot facilities. Continuous upgrades to our CNC and manufacturing equipment have allowed for more efficient output and shorter lead times, while still upholding the standards of quality and reliability for which all “Rostra” divisions are known for.

## Online Orders

Most of the products featured in this catalog can be purchased on-line using our secure on-line marketplace. You can visit our store using the following URL: <https://www.bilbee-ulanet-store.com>. Look for the cart icon next to products that indicate on-line availability.



# Immersion Heaters

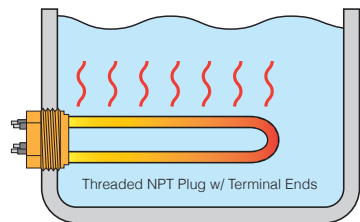
## What are Immersion Heaters?

Immersion heaters are heaters designed specifically to be immersed in a compatible liquid that requires a controlled heat source. Ulanet offers a wide variety of immersion heaters for various applications, and process needs. Our family of immersion heaters come with & without thermostats, all with various geometry for different sized tanks and drums. We also offer some units with a waterproof (IP-67) rating for specialty purposes. All of our immersion heaters are available in various wattage ratings from 500 watts up to 25 kw.

## Immersion Heater Types

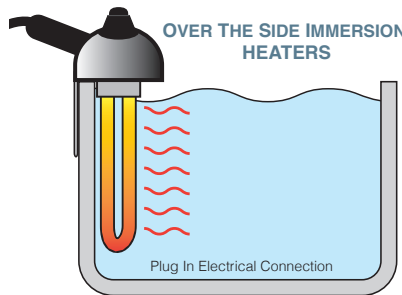
Screw plug immersion heaters are elements with terminals that extend through a threaded hex head for mounting through a threaded port hole. These units come in various wattage density levels, physical length, and power ratings to suit your application requirements. There are some units such as 305 series heaters that come equipped with a standard 110VAC US plug that is designed to be screwed in, then energized using the plug.

**IMMERSION SCREW PLUG HEATING ELEMENTS**



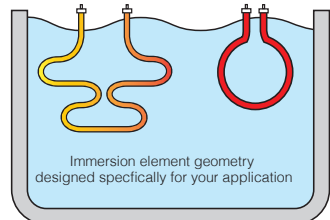
Over the side immersion heaters hang over the side of your vessel that requires heating. These units require the least amount of technical know-how to use. Simply plug the heaters into a standard 110v US AC electrical outlet and set your heater to the desired level. Our over the side heaters come with thermostatic controls, or without. It is recommended that you circulate your fluid when heating to ensure uniformity of thermal properties within your liquid.

**OVER THE SIDE IMMERSION HEATERS**



**STANDARD & CUSTOM IMMERSION HEATING ELEMENTS**

In addition to screw plug and over the side heaters, Ulanet offers a wide range of heating elements of varying geometry, size, and power ratings. These units differ from screw plug as they are intended to be mounted into your system specifically designed for heating elements. These elements can be immersed in compatible liquid, in addition to being run dry.



# Immersion Heaters

## 560 Series (Formerly known as "HeatGrid")

Immersion heater designed to provide an easy solution for those seeking a controlled heat source for quick sterilization in laboratories and kitchens, as well as a control method for general lab liquids. The 560 units come standard with a 1" NPT threaded fitting for permanent through-the-side installation.



- 1" NPT threaded fitting
- T-316 Stainless Steel Heating Element
- 5.5" long heater element
- Pre-set thermostat set to 190°F
- 6' 3-wire cord set (US 115V outlet)
- Wattage options: 500W, 1100W, 1500W
- 115 Volts - AC
- MET Listed: Listing# E212620
- Differential: +/- 1°F in a circulated bath



## 560WP Series

Waterproof rated (IP-67) Immersion heater designed to provide an easy waterproof solution for those seeking a controlled heat source for quick sterilization in laboratories & kitchens, as well as a control method for general lab liquids. The 560WP units come standard with a 1" NPT threaded fitting for permanent through-the-side installation.



- Waterproof head unit (IP-67 Standard)
- 1" NPT threaded fitting
- T-316 Stainless Steel Heating Element
- 5.5" long heater element
- Pre-set thermostat set to 190°F
- 6' 3-wire cord set (US 115V outlet)
- Wattage options: 500W, 1100W, 1500W
- 115 Volts - AC
- MET Listed electronics & element
- PPGF35 Body material (Polypropylene Glass Filled 35%)
- Differential: +/- 1°F in a circulated bath



Custom configurations of units above possible, please contact us directly with your needs at [mvalentin@vernatherm.com](mailto:mvalentin@vernatherm.com)

# Immersion Heaters

## Adjustable Setting 305WP Series

Adjustable heat level, waterproof rated (IP-67) immersion heater designed to provide an easy adjustable waterproof solution for those seeking a controlled heat source for quick sterilization in laboratories & kitchens, as well as a control method for general lab liquids. The 305WP units come standard with a 1" NPT threaded fitting for permanent through-the-side installation.



- Waterproof head unit (IP-67 Standard)
- 1" NPT threaded fitting
- T-316 Stainless Steel Heating Element
- 1100 Watt Unit: 5.5" long element
- 1500 Watt Unit: 7" long element
- 6' 3-wire cord set (US 115V outlet)
- Proportional heat control adjustment
- 115 & 230 Volts - AC
- MET Listed electronics & element
- PPGF35 Body material (Polypropylene Glass Filled 35%)
- Internal LED light indicates when heater is heating
- Differential: +/- 1°F in a circulated bath



## Adjustable Setting 306 Series

Side mount, over top, hanging Immersion heater designed to provide an easy solution for those seeking a controlled heat source for quick sterilization in laboratories and kitchens, as well as a control method for general lab liquids. The 306 series units come standard with an insulated handle and side mount bracket for over the top hang mounting.



- Side mount, hang bracket
- T-316 Stainless Steel Heating Element
- 6" & 20" element lengths
- Proportional heat control adjustment
- 6' 3-wire cord set (US 115V outlet)
- Wattage options: 500W, 1100W
- 115 & 230 Volts - AC
- MET Listed: Listing# E212620
- Differential: +/- 1°F in a circulated bath
- Indicator light illuminates when unit is actively heating
- Protected internal sensing probe prevents mechanical damage

# Immersion Heaters

## Adjustable Setting 305MP Series (MP: Moisture Proof)

Moisture proof, rubber boot reinforced, adjustable immersion heater designed to provide an efficient solution for those seeking a controlled heat source for quick sterilization in laboratories & kitchens, as well as a control method for general lab liquids. The 305MP is moisture resistant, not waterproof. This unit features a standard 1" NPT threaded fitting for permanent through-the-side installation.



- Moisture proof rubber boot covered control head
- 1" NPT threaded fitting
- T-316 Stainless Steel Heating Element
- 1100 Watt Unit: 5.5" long element
- 1500 Watt Unit: 7" long element
- 6' 3-wire cord set (US 115V outlet)
- Proportional heat control adjustment
- 115 & 230 Volts - AC
- MET Listed E212620
- PPGF35 Body material (Polypropylene Glass Filled 35%)
- Protected internal sensing probe prevents mechanical damage
- Differential: +/- 1°F in a circulated bath

## Adjustable Setting 305 Series

1" NPT Threaded immersion heater designed to provide an easy solution for those seeking a controlled heat source for quick sterilization in laboratories and kitchens, as well as a control method for general lab liquids. The 305 series units feature a standard 1" NPT threaded fitting for permanent through-the-side installation.



- 1" NPT threaded fitting
- T-316 Stainless Steel Heating Element
- 5.5" heating element length for 1100 watt unit
- 7" heating element for 1500 watt unit
- 6' 3-wire cord set (US 115V outlet)
- Wattage options: 1100W, 1500W
- 115 Volts - AC
- Proportional heat control adjustment
- Differential: +/- 1°F in a circulated bath
- Indicator light illuminates when unit is actively heating
- Protected internal sensing probe prevents mechanical damage



Custom configurations of units above possible, please contact us directly with your needs at [mvalentin@vernatherm.com](mailto:mvalentin@vernatherm.com)

# Immersion Heaters

## 335 Series - "L Shape"

"L" shaped, Side mount, over top, hanging Immersion heater designed to provide an easy solution for those seeking a controlled heat source for quick sterilization in laboratories and kitchens, as well as a control method for general lab liquids. The 335 series units come standard with an insulated handle and side mount bracket for over the top hang mounting



- T-316 Stainless Steel Probe, Cover, & Heating Element
- 115 Volts - AC, 500 Watts
- 2.375" in height from base to bottom of controls
- 8.75" in length (excluding handle)
- 6' 3-wire cord set (US 115V outlet)
- Head mounted adjustment knob w/ thermostat
- Differential: +/- 1°F in a circulated bath
- Indicator light illuminates when unit is actively heating
- Protected internal sensing probe prevents mechanical damage



## 290 Series (Formerly known as "HeatGrid")

Side mount, over top Immersion heater designed to provide an easy solution for those seeking a controlled heat source. The heating coils are concentrated within the circular element located at the lower end of the device. The 290 series heaters come in five different standard configurations specified in the table below.



- Heater diameter range: 7" - 13"
- Heater height: 14"
- Wattage range: 1000 - 1500
- Proportional heat control adjustment
- 6' 3-wire cord set (US 115V outlet)
- T-316 Stainless Steel Heating Element
- 115 & 230 Volts - AC
- Differential: +/- 1°F in a circulated bath
- Requires a minimum of 5" of liquid above bottom coils



Model#	Height	Diameter	Wattage
290-1	14"	7"	1000
290-2	14"	14"	1500
290-3	14"	10.5"	1000

Model#	Height	Diameter	Wattage
290-4	14"	10.5"	1000
290-6	14"	13"	1500



# Immersion Heaters

## 324 Series

Side mount, over top, hanging Immersion heater designed to provide an easy solution for those seeking a controlled heat source for quick sterilization in laboratories and kitchens, as well as a control method for general lab liquids. The 324 series units come standard with an insulated handle and side mount bracket for over the top hang mounting.



- Side mount, hang bracket
- T-316 Stainless Steel Heating Element
- 5" heating element height
- 3.125" diameter heating element base
- 6' 3-wire cord set (*US 115V outlet*)
- Wattage options: 500W
- 115 Volts - AC
- Proportional heat control adjustment
- Differential: +/- 1°F in a circulated bath
- Indicator light illuminates when unit is actively heating
- Protected internal sensing probe prevents mechanical damage



Custom configurations of units above possible,  
please contact us directly with your needs at  
[mvalentin@vernatherm.com](mailto:mvalentin@vernatherm.com)

# Immersion Heaters

## 492 Series (Formerly known as "HeatGrid")

Side mount, over top Immersion heater designed to provide an easy solution for those seeking a controlled heat source. The heating coils are concentrated within the circular element located at the lower end of the device. The 492 series heaters are specifically calibrated to set temperature ranges as opposed to the 290 series that utilize a proportional heat control system. There are six units within the 492 series specified in the table below.



- Heater diameter range: 7" - 13"
- Heater height: 14"
- Wattage range: 1000 - 1500
- Proportional heat control adjustment
- 6' 3-wire cord set (US 115V outlet)
- T-316 Stainless Steel Heating Element
- 115 & 230 Volts - AC
- Differential: +/- 1°F in a circulated bath
- Requires a minimum of 5" of liquid above bottom coils



### Temperature Controls:

The control dial on the 492 series heaters indicate specific set temperature values at both ends of the control range and in between. Simply set the temperature you desire and the 492 series heater will work to maintain the setting you require.

If your heater is not reaching your desired temperature your wattage output may be lower than what is required.

Please contact us directly with technical questions and we will be happy to assist in selecting the proper heater for your application.

### 492 Series Heater Options

Model#	Height	Diameter	Wattage	Temp Range (2 Options)
492-1	14"	7"	1000	70°F - 250°F or 120°F - 570°F
492-2	14"	7"	1500	70°F - 250°F or 120°F - 570°F
492-3	14"	10.5"	1000	70°F - 250°F or 120°F - 570°F
492-4	14"	14"	1500	70°F - 250°F or 120°F - 570°F
492-6	14"	13"	1500	70°F - 250°F or 120°F - 570°F

# Notes

---

---

---

---

---

---

---

---

---

---

---

---

---

---

---

---

---

---

---

---

---

---

---

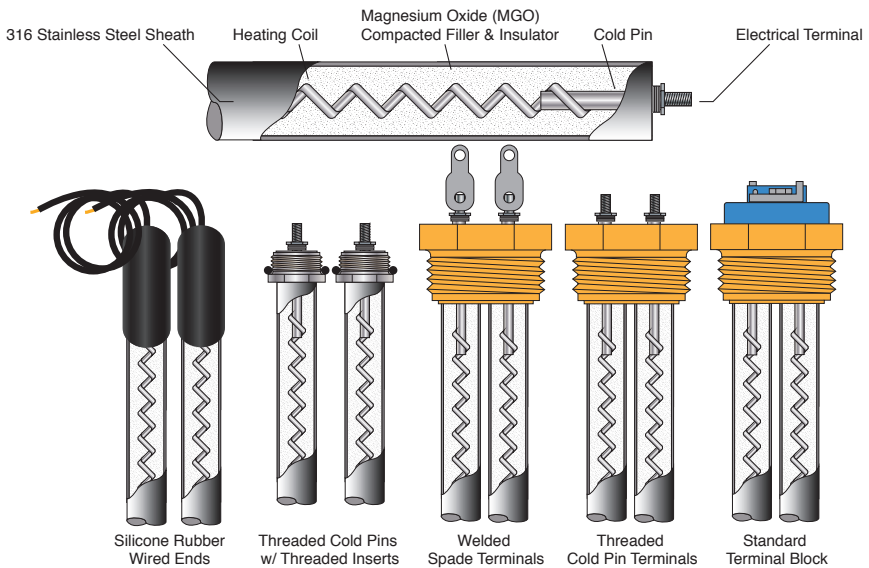
# Heating Elements

## What are Immersion Heating Elements?

Immersion heating elements are the tubular components that output heat energy within our heaters. Some customers require the elements alone for use within their own engineered machinery. Our tubular heating elements can be manufactured in a wide variety of geometry with specific power ratings tailored to your needs. Our competitive edge resides with our ability to provide high quality products to almost any configuration and specification our customers require. Our elements can run at 115 volts up to 480 volts with element lengths of up to 10 feet at industry standard diameters. All of our elements are manufactured in Bristol, CT USA out of 316 Stainless Steel, and are subjected to extensive quality control measures.

## Heating Element Options & Types

Ulanet offers a variety of heating element options for various application needs. Our standard options are shown below. Standard NPT threads are utilized for plug heaters, however any specialized threads can be accommodated. If you require a mix of the options below or an element of specific geometry please contact us directly to discuss your intent. We have a panel of highly qualified, experienced engineers who can assist you with your needs.



## Technical Information

- Maximum Element Length: 10' (3.04m)
- Element Material: 316 Stainless Steel
- Insulating Material: Magnesium Oxide
- Threads: NPT (Standard) & Custom
- Wattage: 500W to 25Kw
- Voltage: 120 - 480v

# Heating Elements

## Heating Element Types



Custom configurations of units above possible, please contact us directly with your needs at [mvalentin@vernatherm.com](mailto:mvalentin@vernatherm.com)

# Enclosed Thermostats

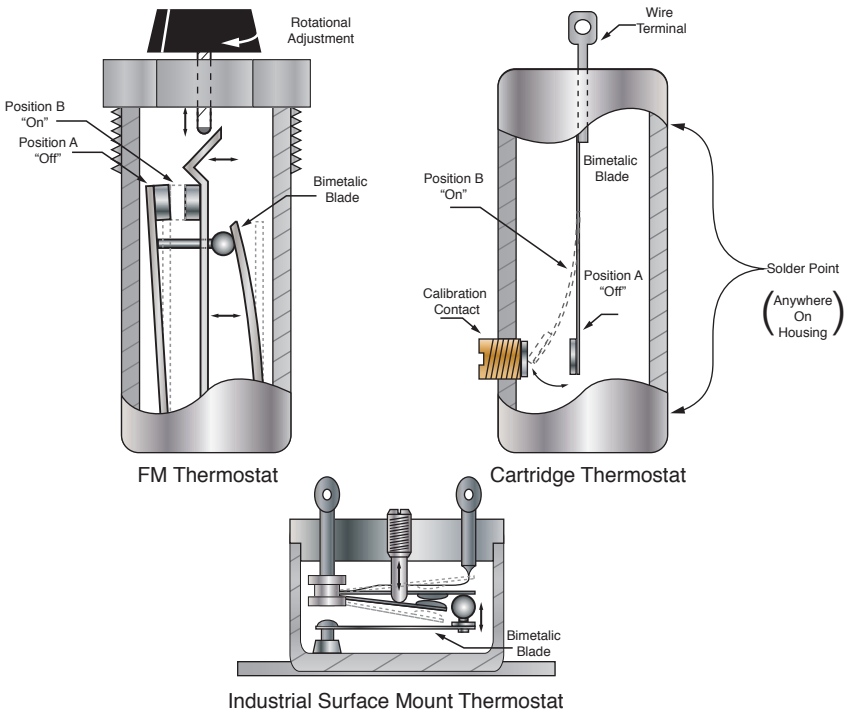
## What are Enclosed Thermostats?

Enclosed thermostats switch off and on electrical circuits based upon the temperature it senses. Calibration is performed during the manufacturing process which sets the thermostat to a specific temperature. Our enclosed thermostats house thermo sensitive bimetallic blades that deflect when it senses an increase in temperature. The thermostat utilizes these blades internally to open and close electrical circuitry in response to thermal fluctuations. Ulanet offers a variety of enclosed thermostats that all regulate their switching via thermal expansion methods. Ulanet's spectrum of enclosed thermostats include:

- Hermetically sealed cartridge
- Hermetically sealed miniature cartridge
- Hermetically sealed rapid response surface mount
- Adjustable FM series cartridge

## What are Hermetically Sealed Thermostats?

A hermetic seal is any type of sealing that makes a given object airtight. The term originally applied to airtight glass containers, but as technology advanced it applied to a larger category of materials, including metal, rubber and plastics. Hermetic seals are essential to the correct and safe functionality of many electronic and healthcare products.



# Enclosed Thermostats

## FM-344 Series (Non-Hermetic) Probe Thermostat

The FM-344 SST<sup>L</sup> (immersion) cartridge thermostat switches on or off an electrical circuit based on the temperature it senses. A calibration process is performed during the manufacturing process which sets the thermostat to the requested temperature. These FM Cartridge Thermostats are the only metal cartridge thermostat that can withstand mechanical clamping or pinching of the cartridge without effecting the set calibration.



- 1/2" NPT Threads
- Hex Head Geometry
- Probe length: 2.25"
- Polyvinyl insulated stranded copper wires
- Rated up to 1200W
- 115 Volts - AC, 230 Volts - AC
- Standard set temp @ 70°F
- Proportional heat control adjustment
- Custom temp settings between 35°F to 450°F
- CNC machined solid body
- Available in NO / NC positions

Model #	Mounting	Probe Length	Adjustable	Range	Notes
FM-156	1/2" NPT HEX	2" length	Yes	50°-500°F	Set screw adjustment
FM-165	Mounting Plate	2.0625" length	Yes	50°-500°F	8-32 mounting holes
FM-171	1/2" NPT	2" length	Yes	50°-500°F	Double ended pipe coupling
FM-247	1/2" NPT	1.125" length	Yes	50°-500°F	Probe length can also be 1"
SE	1/8" or 1/4" NPT	.750" length	No	50°-500°F	Hermetically Sealed or Not Option

All FM thermostats are rated: 1200W 115-230 V.A.C  
 SE Unit rated: 1A. 115 V.A.C. or 3A. 28 V.D.C



# Enclosed Thermostats

## Industrial Surface Mount Enclosed Thermostats

Thermostats that are designed for rapid response to changes in surface temperature. The bi-metal is mounted in intimate contact with a copper base that provides efficient thermal heat transfer. These units satisfy military environmental specifications in many critical applications. Gold plating inhibits oxidation of the sensing surface. The adjustment screw is solder sealed once calibrated in-shop. US Patent: 2,991,341.



Model 28 / 28NP

- Highly durable
- Weight: .216 oz.
- Vertical terminal posts
- Temperature Range: 0°F - 300°F
- Rated: 5A. 115 V.A.C. or 28 V.D.C
- Size: 1.3125" L. x .400" D. x .5625" H.
- Tin finish option reference Model 28NP
- Hermetic sealed when adjustment screw is solder sealed



Model 219 / 219NP

- Highly durable
- Weight: .264 oz.
- Vertical terminal posts
- Temperature Range: 0°F - 300°F
- Rated: 5A. 115 V.A.C. or 28 V.D.C
- Size: 1.3125" L. x .363" D. x .5625" H.
- Tin finish option reference Model 219NP
- Hermetic sealed when adjustment screw is solder sealed



Model 237 / 273NP

- Highly durable
- Weight: .209 oz.
- Vertical terminal posts
- Temperature Range: 0°F - 300°F
- Rated: 5A. 115 V.A.C. or 28 V.D.C
- Size: .750" DIA. x .5625" H.
- Tin finish option reference Model 273NP
- Hermetic sealed when adjustment screw is solder sealed



Custom configurations of units above possible, please contact us directly with your needs at [mvalentin@vernatherm.com](mailto:mvalentin@vernatherm.com)



# Enclosed Thermostats

## Industrial Probe-Type Enclosed Thermostats

Probe-Type industrial thermostats that are hermetically sealed to prevent environmental contaminants from causing a short, or fault withing systems when in operation. The model 374 & the model 440 operate in similar fashion to our other thermostats by taking advantage of bimetallic switches. The stainless steel probe is outfitted with external threads for easy mounting. Contact arrangement is normally closed only.



Model 374

- .125" NPT External Mounting Threads
- Stainless Steel Probe
- Stainless Steel Threads
- Probe Diameter: .250"
- Probe Length: 1.6875"
- Rated: 5A 115 V.A.C. or 28 V.D.C
- Size: 2.781" L. x 0.875" W
- Temperature Range: 0°F - 300°F



Model 440

- .125" NPT External Mounting Threads *or*
- 7/16"-20 UNF External Mounting Threads
- Stainless Steel Probe
- Stainless Steel Threads
- Probe Diameter: .250"
- Probe Length: 1.718
- Rated: 5A 115 V.A.C. or 28 V.D.C
- Size: 2.781" L. x 0.875" W
- Temperature Range: 0°F - 300°F

# Enclosed Thermostats

## Miniature Hermetically Sealed Cartridge Thermostats

Hermetically sealed thermostats from Ulanet offer exact temperature control in tough industrial environments where external contaminants are a concern. Our hermetically sealed line of cartridge thermostats include miniature & standard size units. All units are engineered to rapidly respond to changing conditions and make or break electrical circuits. Utilizing a “slow make/slow break” action allows for temperature differentials that can be as small as +/-1°F. Hermetically sealed units are air tight and available in normally-closed or normally-open initial states.



BW



DR



PD-S / WP

- Cartridge diameter range: 0.1875" - 0.25"
- Cartridge length range: 0.925" - 1.750"
- Temperature control up to 400°F
- Rated up to 100 Watts
- 115-230VAC
- Hermetically sealed body construction
- Thermostat body material: Copper w/ Tin Plate

P#	Size	Rating	Grounded Case	Insulated Contacts	Glass Tip Adj Screw
DR	1/4" Dia x .970"L	1A. 115VAC	N	2	N
PD-S	1/4" Dia x .970"L	1A. 115VAC	Y	1	N
BW	1/4" Dia x 1.75"L	1A. 115VAC	N	2	Y
BA	1/4" Dia x 1.25"L	1A. 115VAC	Y	1	N

Models DR, PD-S, BA, and BW are additionally rated as: 3A. 28VDC

# Notes

---

---

---

---

---

---

---

---

---

---

---

---

---

---

---

---

---

---

---

---

---

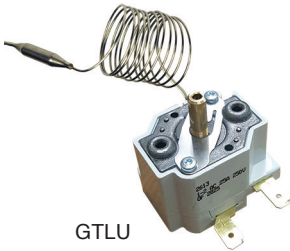
---

---

# Bulb & Cap Thermostats

## Bulb & Capillary Thermostats (GTLU & A-5022 Series)

Bulb & Capillary thermostats sense remote temperatures through the use of a capillary tube and a sensing-bulb on one end. The bulb and capillary tube assemblies contain expansion material capable of expanding and contracting at specific set temperatures. The expansion material within the bulb and tube sense thermal properties and react by expanding or contracting. The expansion and contraction behavior within the tube / bulb assembly activates a switch controlling your system. Bulb & Cap thermostats are used to sense and regulate temperature remotely, such as from outside of a walk-in freezer or refrigeration unit. Our units vary by temperature range, voltage, amperage, capillary tube length, bulb size, material type, and switch state (N.O. or N.C).



GTLU

- Capillary length range: 20" to 40"
- Bulb length range: 1.830" to 4.25"
- Temperature range: 32°F to 650°F
- Rating range: 125VAC 15A to 240VAC to 10A
- Bulb diameter range: .236" to .250"
- Hermetically sealed bulb & capillary construction
- Custom options available - Contact us.

P#	Temp Range	Rating	Bulb Dimensions	Capillary Lengths	Switch State
GTLU0001	50°F - 248°F	240VAC 20A	Dia: .236" Length: 3.346"	20.078"	N.C
GTLU0003	32°F - 572°F	240VAC 20A	Dia: .118" Length: 4.250"	39.685"	N.C
A5022-150	70°F - 150°F	240VAC 10A 125V 15A	Dia: .250" Length: 1.830"	39.370"	N.C
A5022-250	70°F - 250°F	240VAC 10A 125V 15A	Dia: .250" Length: 1.830"	39.370"	N.C
A5022-350	70°F - 350°F	240VAC 10A 125V 15A	Dia: .250" Length: 1.830"	39.370"	N.C
A5022-450	70°F - 450°F	240VAC 10A 125V 15A	Dia: .250" Length: 1.830"	39.370"	N.C
A5022-550	70°F - 550°F	240VAC 10A 125V 15A	Dia: .250" Length: 1.830"	39.370"	N.C



A5022

# RoboTemp Control

## RoboTemp™ 315 Stepless Heat Control

The RoboTemp 315 is an “on-off” pulsator which proportions and feeds electrical power to heaters without control. The ratio between on and off can be adjusted by rotating the control knob. Heaters that only have an “on/off” setting can be controlled variability using the RoboTemp technology.



- Rating: 115VAC, 1500W.
- Supplied with 6' three wire cord set
- Reduces temperature overshoot in heaters
- Increases electrical efficiency
- Pilot light indicates on-off cycles
- Adjustment knob meters modulation output
- Durable metal enclosure
- Oil resistant label
- Easy to use



## RoboTemp™ 515 Solid State Stepless Heat Control

The RoboTemp 515 provides the same solution as the 315, where it's electrical power output is modulated in such a way that it can control a heater that has no adjustment. The difference between the 315 and the 515 is how the switching is performed internally. The 515 unit takes advantage of solid state circuitry which increases the life of the RoboTemp unit.



- Rating: 115VAC, 1500W.
- Supplied with 6' three wire cord set
- Reduces temperature overshoot in heaters
- Increases electrical efficiency
- Pilot light indicates on-off cycles
- Adjustment knob meters modulation output
- Durable metal enclosure
- Oil resistant label
- Solid State Circuitry (*Increases RoboTemp longevity*)



# Knife Box Sterilizers

## Knife Box Sterilizers & Sterilizer Heaters

Manufactured from heavy duty 14 Gauge (.063") thick 316 stainless steel with heavy welds for long lasting use, and maximum durability. Our knife box units have a specialized external electropolished finish that is stain and bacteria resistant that complies with stringent standards of the food-processing, chemical, and medical industries. The knife box itself can be placed on a counter / table, hung from the side of sink (either side), or mounted on the wall.

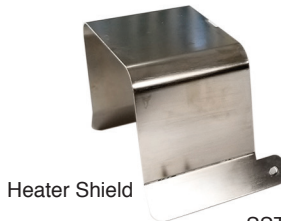
**The tank** has threaded heater ports on each side designed for left or right side heater mounting, and a drain port at the bottom for easy fluid evacuation. All Ulanet knife box units come with detachable heater element shields that can be installed on either side of the tank the heater is mounted to.

**The heaters** are threaded into the knife box itself, the Ulanet sterilizer heater once set to your desired setting will sterilize your equipment safely and efficiently. The heaters are available in multiple wattage settings to suit your personalized needs, and are energized through a standard US 6' 3-wire cord-set. All heaters are outfitted with 1 inch NPT male threads that screw into not only Ulanet knife boxes, but most on the market today. The Ulanet sterilizer heaters are MET Listed for electrical safety and are subject to a strict set of quality control measures.



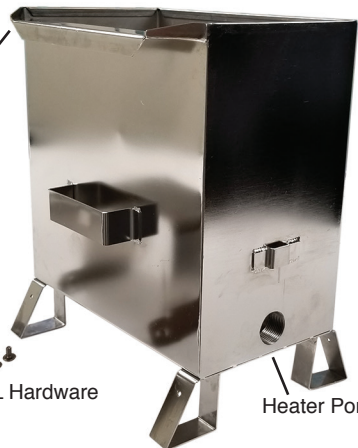
- Tank Dimensions: 12"w x 12"h x 7"d
- Tank Maximum Holding Capacity: 3.75 Gallons
- Electropolished External Surfaces
- Outside Dimensions: 16.13"w x 14.19"h x 9.17"d
- Heater Ports: Both sides of tank
- Mounting: Table, Sink Edge, or Wall
- Tank Material: 14 Gauge (.064") 316 SST'L

Sink Mount / Overflow Lip



Heater Shield

SST'L Hardware



Heater Port

# Knife Box Sterilizers

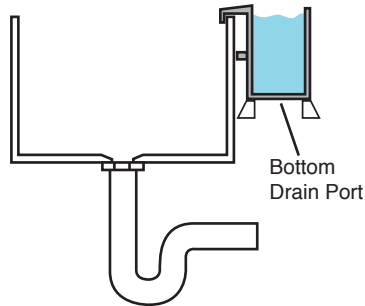
## Sink Mounting Options



The knife box can hang on either side of a sink. Heaters can be installed on either side of the tank giving you the option to hide or keep your heater head visible.

Sink mounting allows for easy access to the bottom drain port. The drain port can easily be fitted with a simple ball valve for open/close functionality.

The tank handle when mounted on the wall or sink will keep the tank level.



## Compatible Sterilizer Heaters

Full technical specifications can be found on pages 4 & 5



560WP



MP305



M305



# Product Applications

## Ulanet Product Applications

The applications listed on these pages provide examples of how our products are being used within various industries. The sampling of applications listed here provide just a small preview into the wide spectrum of use our heaters are being used in.

### Food Service Applications

- Metal Utensil Sterilization ie. Knives, etc.
- Brewery / Distillery Heating
- Buffet Table / Steam Table Heating
- Soup Warmers
- Meat Packing
- Food Warmers
- Industrial Beverage Heating
- Fluid Transfer Line Cleaning

### Aerospace Applications

- In Flight Food Warmers
- In Flight Coffee Makers
- Pitot Tube Heating
- De-Icing Systems
- Landing Lights
- Compartment & Cockpit Comfort
- Antenna & Component Control
- Mobile Runway De-Icing
- Aircraft Pre-Flight Fluid Heating
- General HVAC; Bulk Cargo, Flight Deck

### Laboratory Applications

- Autoclave Steam Generation
- Immersion Bath Fluid Heating
- Fluid Bath Heating
- Pharmaceutical Manufacturing Process Cleaning

### Misc. Applications

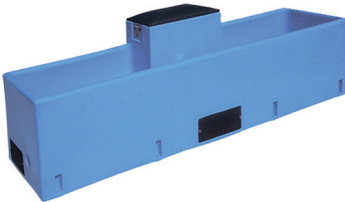
- Pool Heating
- Hot Tub Heating
- Large Industrial Fluid Tank Heating
- Baptismal Pool Heater
- Agricultural Waterer Heater
- Livestock Trough Heater



Custom configurations of units above possible,  
please contact us directly with your needs at  
[mvalentin@vernatherm.com](mailto:mvalentin@vernatherm.com)



# Product Applications



Custom configurations of units above possible,  
please contact us directly with your needs at  
[mvalentin@vernatherm.com](mailto:mvalentin@vernatherm.com)

## Notes:

---

---

---

---

---

---

---

---

---

---

---

---

---

---

---

---

---

---

---

---

---

---

---

---

# Notes

---

---

---

---

---

---

---

---

---

---

---

---

---

---

---

---

---

---

---

---

---

---

---

---

Ulanet and the Ulanet Logos are registered trademarks of Rostra Vernatherm

Ulanet is a division of Rostra Vernatherm.LLC

Ulanet Headquarters  
70 Enterprise Drive, Suite 1, Building 2  
Bristol CT 06010  
USA

Rostra Verantherm Headquarters  
106 Enterprise Drive  
Bristol CT 06010  
USA



<https://www.Ulanet.com>  
<https://www.Vernatherm.com>  
<https://www.BilbeeControls.com>  
<https://www.Bilbee-Ulanet-Store.com>

